

# C485-E ELECTRIC MOWINGBOAT



[conver.com](https://conver.com)

**CONVER**



## Maximum production and work pleasure

### Zero Emission

Whisper-quiet and environmentally responsible mowing. With Conver's latest innovation C485-E, mowing without CO2 emissions is the new standard.

The mowing boats' design is very well thought-out, and only quality components are used to make them reliable in all conditions and suitable for a wide range of applications.

The C485-E mowing boat is the latest innovation in our program. With this fully electric mowing boat, you meet the latest guidelines and are you ready for the future. The boat has a width of 185 cm and is suitable for a range of Conver tools (including a T-knife, pushframe and mowingbucket). The 3 mm steel hull of this model has two watertight, integrated bulkheads. This separates the operator's compartment from the bow and the engine compartment.

### The convenience factor strikes again

The deck of the C485-E is fully enclosed and has a tool carrier with a quick fit system at the front to attach various tools. Tools can, therefore, be changed quickly and safely.

### Ergonomics

An operator who is comfortable in his job will be more effective. That is why Conver pays a lot of attention to the compartment of the operators. The design is based on 50 years of experience. The operators' compartment is spacious, and the seat and controls are fully adjustable. The machine is easy to operate and to maintain. The silent engine makes the operator's working comfort optimal.

**CONVER**

### Conver BV

Industrieweg 18, 4283 GZ  
Giessen, The Netherlands  
T: +31 (0)183 447272 |  
E: [info@conver.com](mailto:info@conver.com)  
[www.conver.com](http://www.conver.com)

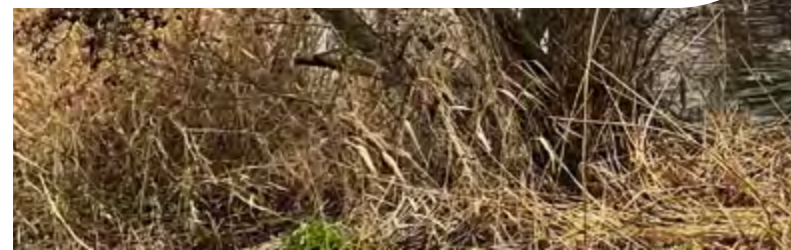
**CONVER**

# Innovative

## Conver Electric mowing boat

The C485-E comes with two electric motors. A battery pack powers the engines. Depending on the boat's performance, the tool and the operation, these have a working time of approx 8 hours. The C485-E can be supplied with the following tools: trailing knife unit, embankment cutting unit, weed rake and T-front cutter.

Operator comfort, safety and large capacity have been the guiding principles during development. Besides the excellent comfort, the C485-E is practically silent. The division into watertight compartments and the spacious deck with raised edges offers protection against water. The spacious operator's compartment has fully adjustable electric operating controls and comes standard with proportionally electronically controlled valves.



## Light controls and optimal working position

The C485-E mowing boat is controlled completely hydraulically. Load sensing technology, electric steering and pressure compensation valves make the reliable hydraulic system efficient and easy to use.

The integrated storage area allows the operator to keep the operating compartment tidy. The operator's comfort and ease of operation can be further improved with optional extras

## Ground-breaking design

Conver continues to renew and to innovate. With the introduction of the new C485-E, Conver has decided to develop the concept together with customers and operators worldwide. The different requirements for occupational health, safety and the environment in each country are integrated into one concept. This concept makes the primary machine available throughout, without further modifications. The C485-E works as efficiently as you are used to from the C485 Diesel engine version.





## Nothing will stop you

### Modern power source

The C485-E is equipped with a reliable lithium iron phosphate battery. The battery is mounted on a subframe which also serves as a sliding counterweight.

### Hydraulic anti-coiling auger

The C485-E comes with a single anti-coiling auger. This proven and tested drive system offers the mowing boat excellent propulsion

and manoeuvrability in the most demanding shallow water situations, either going ahead or astern. The design of the augers will avoid any aquatic vegetation or debris becoming wrapped around the propeller shafts. The sturdy auger has a robust construction and can be folded up and adjusted up and down.





## Maximum return at minimum cost

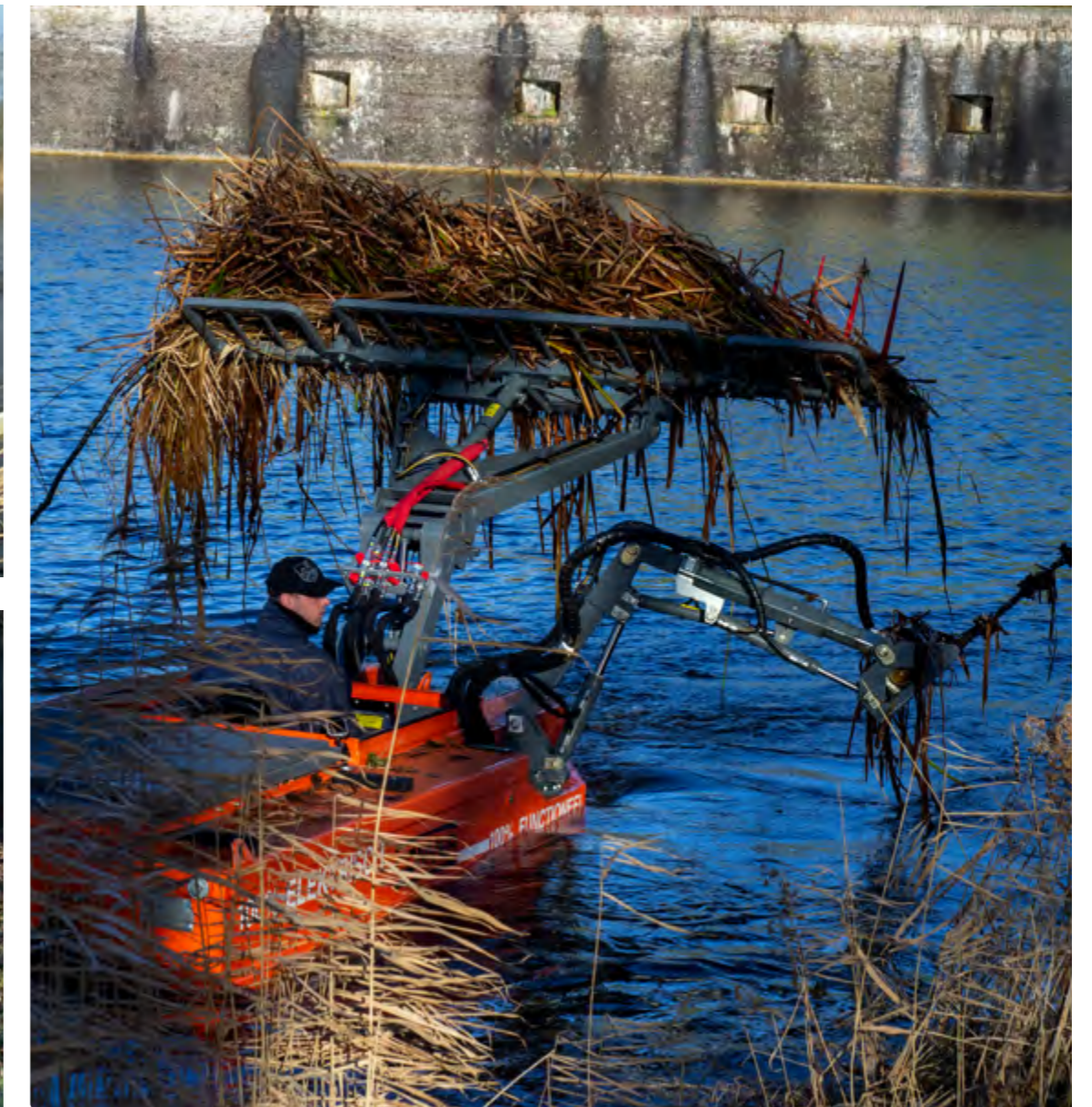
If you choose a Conver mowing boat, you choose a machine with a long lifespan. Because of its reliability and low maintenance expenses, the machine will pay for itself very quickly. Maximum return at minimum cost. That is what you can expect from Conver.

### Your Conver C485-E tailor-made

The modular construction method makes it possible to deliver almost every component from stock. Of course, we can also develop your tailor made boat based on your specifications and wishes. Conver also offers a wide range of options to improve the operator's job satisfaction further.

### Conver leaves nothing to chance

Quality above all else. That is what you can expect from Conver, whether you choose a mowing boat or a tool. Of course this also applies to our boat trailer that is an optional extra and was developed specially to transport, launch and retrieve mowing boats from the water. Certain hydraulic functions of the boat trailers can be radio controlled to increase the operator's safety.



## Available Tools

**Trailing knife unit:** For bottom vegetation removal · With a single or double trailing knife · Width of each knife adjustable up to 2.5 m as standard · Working depth up to 3 m;

**Embankment cutting unit:** · For mowing waterway embankments. · Double acting Busatis knife system. · Blade length of 1.20 or 1.40 m. · Bottom or top drive depending on the type of mowing work;

**Weed rake:** For mowing bottom vegetation. · Double acting Busatis knife system. · Standard 2 m cutting width. · Cutting depth of 1.20 m. · Cutting depth and width variations available upon request. · Hydraulically set cutting angle to track the bottom of the watercourse and tilting unit for passing low bridges are optional;

**Push frame:** · For various clean-up operations 3 m working width. · Two folding 0.65 m widening units. · Equipped with rigid front loader teeth. · Combi-tilt function to clear floating vegetation and bottom debris with substantial unloading range;

**Alternative tools:** The central tool with quick release coupling makes it possible to connect alternative tools, such as a waste collection basket.



### Standard Model

Central tool arm with quick coupling system for tools and hydraulic connections;	Standard available in RAL 2004;
Electrical operation of cylinders and tool functions;	Storage area in driver's compartment;
Height and angle adjustable steering column with removable steering wheel;	Fully enclosed, removable non-slip floor in the cabin;
Lowered mast console with 180 degrees of travel and hydraulic extension up to 0.40 m;	Non-slip treatment of the deck;
Multi-adjustable weather-resistant seat with armrests;	Aluminium vandal-proof cover to close off the driver's compartment;
Wearing strips on hull corners;	4x lifting hooks for use with four part chain and 1x central lifting eye;
Hydraulic height-adjustable auger, 0.2m;	1x towing eye for use with boat trailer;
Singe anti-coiling auger;	

### Options

Cruise control for auger operation;

Built-in Track & Trace system;

Optional available in different RAL colours;

Biodegradable, oil and water absorption filter;

Electric bilge pump;

Heating for driver's seat and back, switch operated;

Built-in radio with speakers;

Convertible cab, PVC fabric with stainless steel frame, to be stored in cab section;

Hard-top cabin with windscreen wiper;

Plastic fenders(s);

**Conver BV**

Industrieweg 18, 4283 GZ  
Giessen, The Netherlands

**T:** +31 (0)183 447272

**E:** [info@conver.com](mailto:info@conver.com)

[www.conver.com](http://www.conver.com)

**SPECIFICATIONS CONVER C485-E**

Dimensions (L x W x H)	4,8 x 1,86 x 0,95 m (excl. tools)
Material	3 mm geprofiled St52
Weight	2.100 - 2.600 kg (depending on the model)
Draught	approx. 0,4 m
Colour	Orange RAL2004 / Grey RAL7012
Engine	Electric motor
Emission class	Zero Emission
Working time	approx. 6-8 hour (depending on the model, tool and operation)
Cooling system	Keel cooling
Electric installation	12V + 90V
Propulsion	Single 450 mm hydraulic anti-coiling auger
Steering	Power steering with a 2 x 50° steering angle
Hydraulic system	2x plunger pump with (semi-)proportional valves
Battery capacity	70 kWh @ 80V
Hydraulic tank	95 L with suction and return filter. With integrated oil cooling
Hydraulic oil	Univis N46
Maximum sailing speed	6-7 km/h
Charging battery	230v, 400v and Car Charger Pole are possible